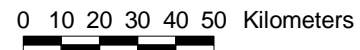


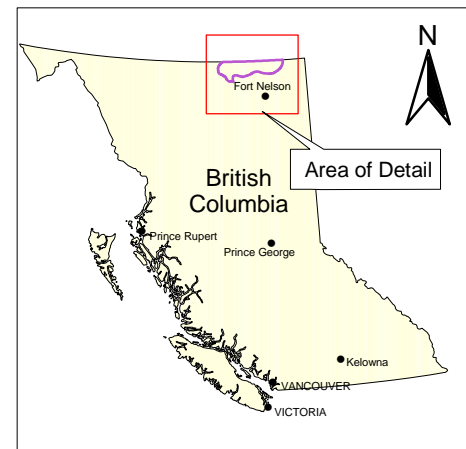
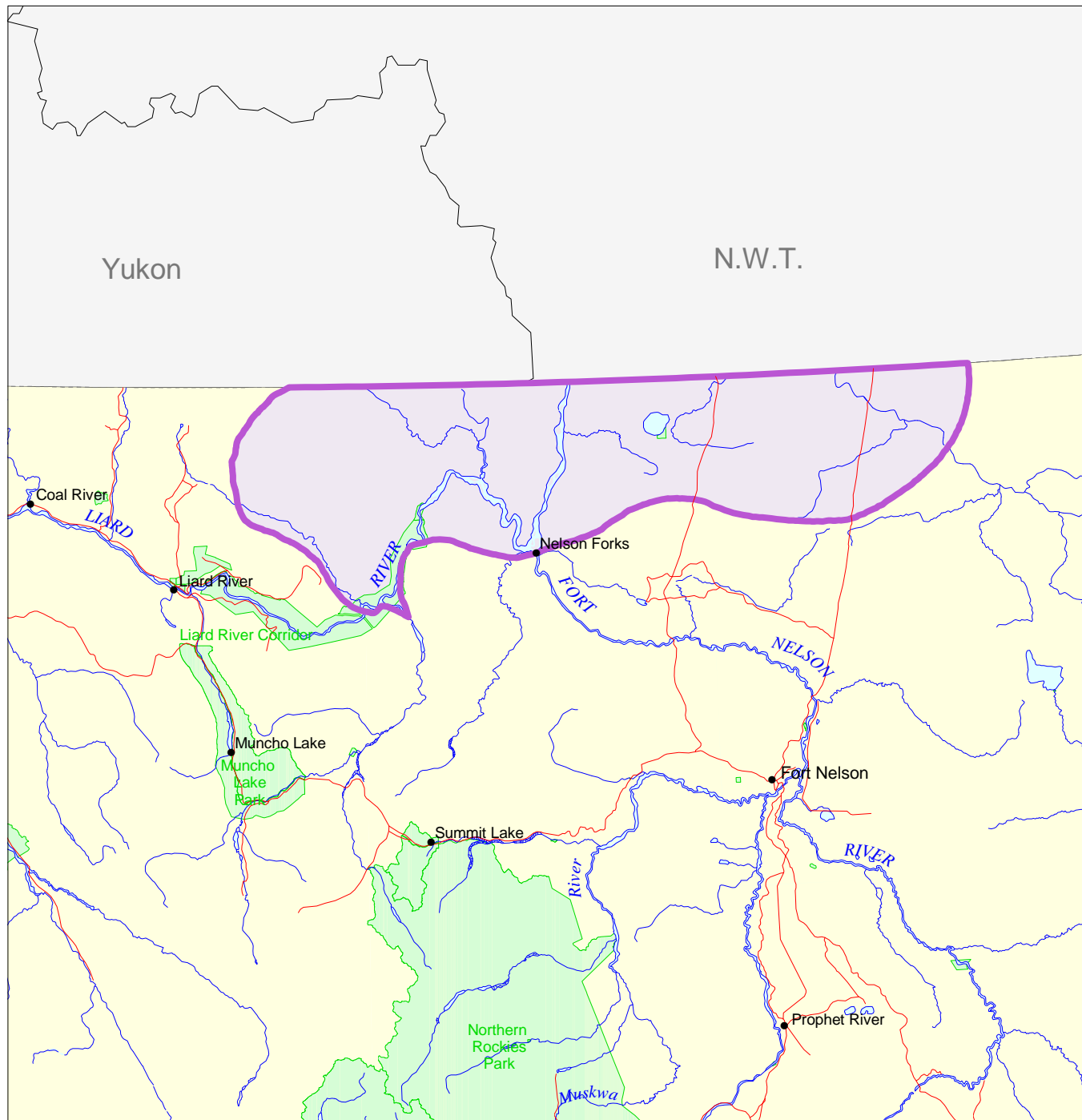
TREATY NEGOTIATIONS IN BRITISH COLUMBIA

STATEMENT OF INTENT BOUNDARY
ACHO DENE KOE FIRST NATION



LEGEND

- Statement of Intent Boundary
- Roads
- Populated Places
- Parks



The boundary on this map represents the approximate boundary of a traditional territory as described in a First Nation Statement of Intent to negotiate treaties which has been submitted to the B.C. Treaty Commission. The boundary is illustrative only and may be updated in the future. Publication of this map does not imply that the First Nations, the Province of British Columbia, or the Government of Canada have agreed to the boundary shown. The Statement of Intent boundaries of neighbouring and overlapping First Nations are not shown.

December 18, 2001